

ADMISSION

- Complete Application Form online
- Official transcript of any coursework
- Personal Statement
- Two official letters of recommendation
- Curriculum Vitae
- Two professional photos
- Medical College Admission Test (MCAT) scores or similar test - **Optional**

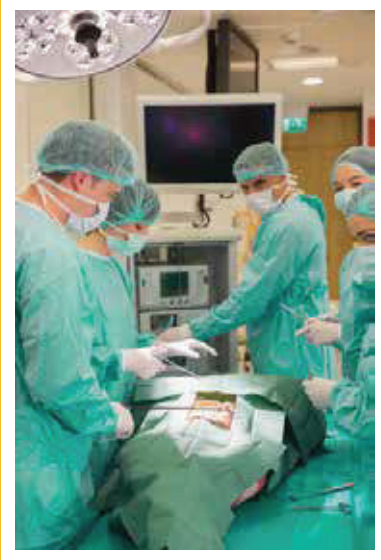
International applicants (non US / non Canadian) must submit:

- A-** Official credential evaluation report of transcript through World Education Services (WES); visit www.wes.org
- B-** Official report of scores on the Test of English as a Foreign Language (TOEFL) or International English Language Testing System (IELTS)



WHY WINDSOR?

- **16 months Biomedical Sciences Program and 4 Year MD Program**
- Affordable Tuition
- Fast application processing
- Rolling Admission Semesters (January, May and September)
- Good Student to Faculty Ratio
- Personalized Mentorship & Tutoring
- Support through Student Organizations
- Basic Sciences on the beautiful island of St. Kitts
- Standardized NBME Examinations
- Good Residency Match Success
- Excellent Alumni Association



ACADEMIC PROGRAMS

16

Months

Biomedical Sciences
(Premedical) program

1 st	Semester General Biology I with Lab, General Chemistry I with Lab, English Composition I, Pre-Calculus, Communication skills in medicine, Introduction to psychology.
2 nd	Semester General Biology II with Lab, General Chemistry II with Lab, General Physics I with Lab, English Composition II, Calculus.
3 rd	Semester Introduction to Biochemistry, Organic chemistry I, General Physics II with lab, Molecular Biology I, Medical terminology.
4 th	Semester Molecular Biology II, Organic Chemistry II with lab, Introduction to Microbiology, Introduction to Anatomy, Introduction to Physiology

4

Years

Doctorate of Medicine
(MD) program

BASIC SCIENCE CURRICULUM (20 Months)

1 st	Semester Fundamentals of Basic sciences I, Musculoskeletal and Integumentary system I, Cardiovascular and respiratory system I, ICM I, Medical Genetics, Fronteirs I
2 nd	Semester GI and Hepatobiliary system I, Endocrine and Reproductive system I, Renal and Nervous system I, ICM II, Neuroscience, Frontiers II
3 rd	Semester Fundamentals of Basic Sciences II, Neoplasia and Immune system, Cardiovascular and Hematologic System II, ICM III, Fronteirs III
4 th	Semester Respiratory and Nervous system II, GI and Hepatobiliary system II, Endocrine and Reproductive system II, Renal and Musculoskeletal system II, ICM IV, Behavioural Sciences, Fronteirs IV
5 th	Semester Advanced Introduction to Clinical Medicine Comprehensive Basic Sciences Review
6 ^{to} 11 th	<div>CLINICAL SCIENCE CURRICULUM (72 Weeks)</div> <div><div>Semesters</div><div><div>Internal Medicine 12 wks Pediatrics 6 wks Family Medicine 6 wks</div><div>General Surgery 12 wks Obstetrics & Gynecology 6 wks Psychiatry 6 wks</div></div><div>Selectives (12 wks) & Electives (12 wks)</div></div>





Accredited by CAAM-HP



Government of St. Kitts



World Health Organization



Medical Council of Canada



St. Christopher and Nevis Accreditation Board



Education Commission For Foreign Medical Graduates



Medical Council of India

GETTING TO KNOW

THE ISLAND



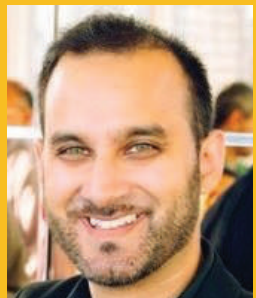
ST. KITTS

Windsor University School of Medicine is licensed and chartered by the Ministry of Education and Accredited by CAAM-HP and St. Kitts & Nevis Accreditation Board. It is also recognized by the ECFMG, MCC as well as registered in the International Medical Education Directory (IMED) and World Health Organization (WHO). The university is located on the beautiful island of St. Kitts.

St. Kitts is located in the Leeward Islands at the northern end of the Lesser Antilles, approximately 220 miles southeast of San Juan, Puerto Rico. Together with her sister island, Nevis, they constitute the Federation of St. Christopher and Nevis, an English-speaking member of the British Commonwealth of Nations that continues to recognize the British monarch as the head of state. The country's internal government is led

by a prime minister. The name of the capital, Basseterre, reflects the French heritage of much of St. Kitts' history. Until recently, St. Kitts and Nevis were primarily agricultural, with sugar cane as the main crop; however, new road construction and economic growth are beginning to bring the islands into the mainstream of the tourism industry, and they are becoming known as pleasant and comfortable vacation destinations.

SUCCESS STORIES



Karim Vellani

Hometown: Hamilton, Ontario
Residency: Family Medicine,
University of Toronto



Dr. Adenike Eketunde

Hometown: Lagos Nigeria
Residency: Pathology
Boston Medical Center



WINDSOR UNIVERSITY SCHOOL OF MEDICINE

Contact Us:

St. Kitts Campus

1621 Brighton's Estate, Cayon
St. Kitts, West Indies

US information office:

303-20646 Abbey Wood Ct.
Frankfort, IL 60423

www.windsor.edu

info@windsor.edu

Phone: 1-844-994-6376



WINDSOR UNIVERSITY SCHOOL OF MEDICINE

Established - 1998

Accredited by CAAM-HP



MEDICAL EDUCATION

you've always dreamed of...



AFFORDABLE TUITION

PER SEMESTER

Biomedical Semesters 1 to 4 USD \$3,990

MD Semesters 1 to 5 Tuition USD \$6,240

MD Semesters 6 to 11 Tuition USD \$10,990

**Additional fees apply